

“Colonnade”

Square & Rectangular Swaged Downpipe



S
q
u
a
r
e
S
w
a
g
e
d
D
o
w
n
p
i
p
e



Unit 2, Vitruvius Way
Meridian Business Park
Braunstone
Leicester
LE19 1WA

Tel: 0116 2894400

Fax: 0116 2894433

E-mail: sales@arp-ltd.com

Web: www.arp-ltd.com

“Colonnade”

Square & Rectangular Swaged Downpipe

Description:

Square or rectangular downpipe formed from extruded 6060 T4 aluminium in various sizes (63x63mm, 76x76mm, 101x101mm, 101x76mm & 150x150mm*) & supplied with a complete range of accessories ie offsets, bends, shoes, pipe clips.

Installation & Jointing:

Ensure vertical alignment between drain & gutter outlet.

A Pipe Clip should be fixed directly underneath the pipe socket with additional clips at 2m maximum intervals. Clips to be fixed with plastic wall plugs & 5mm x 50mm st.stl screws (dependant on substrate).

See Fig 1.

* Note:150mm Square downpipe socket is fabricated,all other sizes the tube is swaged.

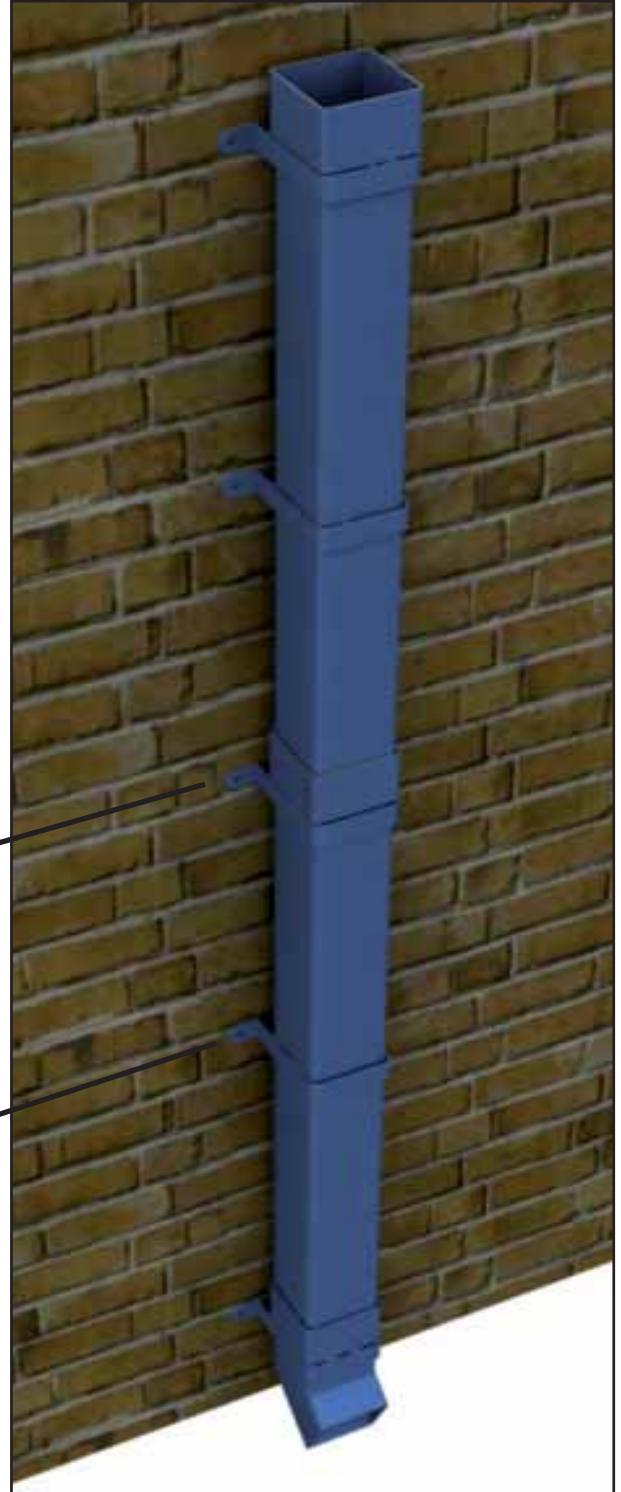


Fig 1.

S
q
u
a
r
e
S
w
a
g
e
d
D
o
w
n
p
i
p
e

“Colonnade”

Square & Rectangular Swaged Downpipe

Composition & Manufacture:

‘Colonnade’ downpipes are manufactured from Aluminium alloy 6060 T4 to BS1474: 1972 & the product complies to, or exceeds all relevant standards.

Fittings for the downpipes are formed using fabrication methods involving cut,mitre & welding techniques using specially made jig & forming tools.

Socket depth on all ranges is 60mm.

Finish:

Mill Finish Aluminium or Polyester Powder Coated to a range of BS or RAL Colours.

Model Specification:

ARP heavy grade ‘Colonnade’ Swaged Downpipes & fittings to BS 2997 (EN612) using 6060 T4 grade extruded aluminium in accordance with BS 1474: 1974. Profile to be Square/Rectangular*., size 63x63mm (1.6mm), 76x76mm (1.6mm), 101x101mm (2.5mm), 101x76mm (2mm), 150x150mm (3mm).*

Materials to have factory applied Polyester Powder Coat to all significant surfaces in accordance with BS EN 122026 Matt/Satin/Gloss* finish, or alternatively plain aluminium Mill Finish. All to be supplied by Aluminium Roofline Products Ltd, Unit 2, Vitruvius Way, Meridian Business Park, Braunstone, Leicester LE19 1WA. Tel 0116 2894400 Fax 0116 2894433.

To be fastened by 5mm x 50mm (dependant on substrate) stainless steel screws, in accordance with the manufacturer’s specification & guidelines. Downpipes to be fixed at 2m centres maximum with supplementary brackets at or near fittings.

* Delete as appropriate



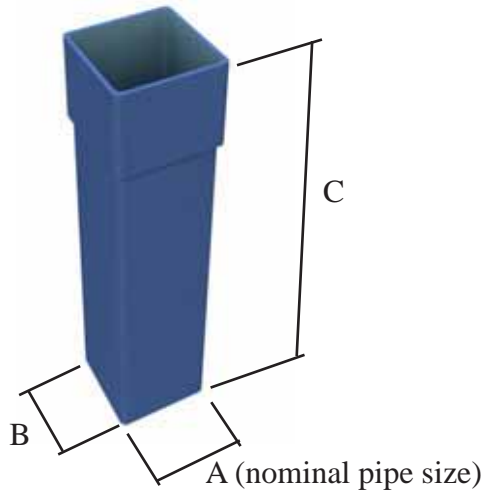
S
q
u
a
r
e
S
w
a
g
e
d
D
o
w
n
p
i
p
e

“Colonnade”

Square & Rectangular Swaged Downpipe

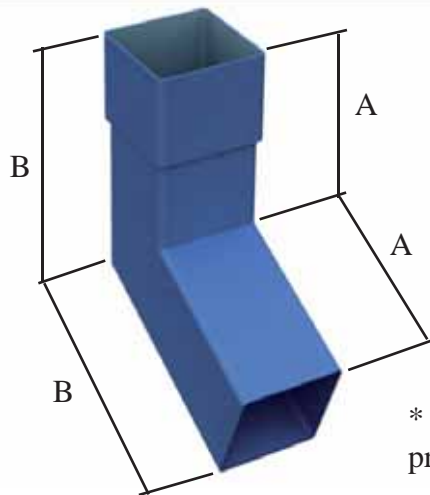
S
q
u
a
r
e
S
w
a
g
e

Downpipe Lengths



A	B	Code	Code	Code	Code	Code
(mm)	(mm)	C=3.0m	C=2.5m	C=2.0m	C=1.0m	C=0.5m
63	63	2SDP3	2SDP2.5	2SDP2	2SDP1	2SDP0.5
76	76	3SDP3	3SDP2.5	3SDP2	3SDP1	3SDP0.5
101	76	43DP3	43DP2.5	43DP2	43DP1	43DP0.5
101	101	4SDP3	4SDP2.5	4SDP2	4SDP1	4SDP0.5
150	150	6SDP3	6SDP2.5	6SDP2	6SDP1	6SDP0.5

Bends



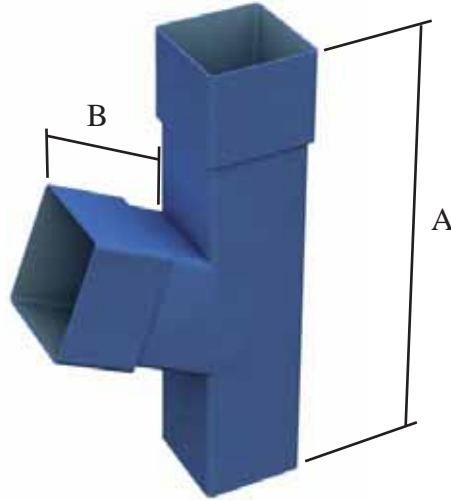
* Please specify “Forward” projecting or “Side” projecting.

Pipe Size	Code	A	B	Code	A	B	Code	A	B
(mm)	92.5°	(mm)	(mm)	112.5°	(mm)	(mm)	135°	(mm)	(mm)
63x63	2SB92	120	180	2SB112	120	160	2SB135	120	145
76x76	3SB92	120	192	3SB112	120	170	3SB135	120	150
101x76*	43B92	120	192	43B112	120	170	43B135	120	150
101x101	4SB92	120	215	4SB112	120	185	4SB135	120	165
150x150	6SB92	120	267	6SB112	120	222	6SB135	120	182

“Colonnade”

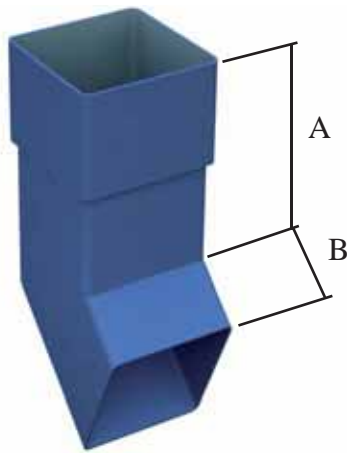
Square & Rectangular Swaged Downpipe

Y-Branch



Pipe Size (mm)	Code	A (mm)	B (mm)	Code	A (mm)	B (mm)	Code	A (mm)	B (mm)
	92.5°				112.5°				135°
63x63	2SY92	260	120	2SY112	260	120	2SY135	260	120
76x76	3SY92	260	120	3SY112	260	120	3SY135	260	120
101x76	43Y92	300	120	43Y112	300	120	43Y135	300	120
101x101	4SY92	300	120	4SY112	300	120	4SY135	300	120
150x150	6SY92	300	120	6SY112	300	120	6SY135	300	120

Shoe



Pipe Size (mm)	Code	A (mm)	B (mm)
63x63	2SS	120	40
76x76	3SS	120	40
101x76	43S	120	40
101x101	4SS	120	40
150x150	6SS	120	40

S
q
u
a
r
e
S
w
a
g
e
d
D
o
w
n
p
i
p
e

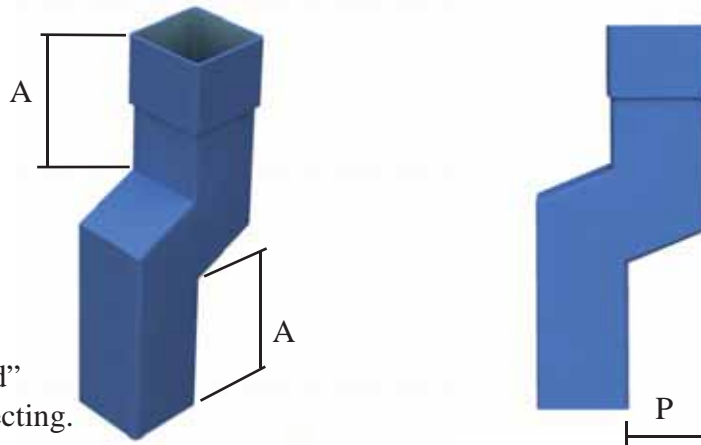
“Colonnade”

Square & Rectangular Swaged Downpipe

One part Swan-necks

One part swan-necks are supplied 112.5° as standard. Plinth offsets are supplied 135° as standard. Please specify other requirements.

* Please specify “Forward” projecting or “Side” projecting.

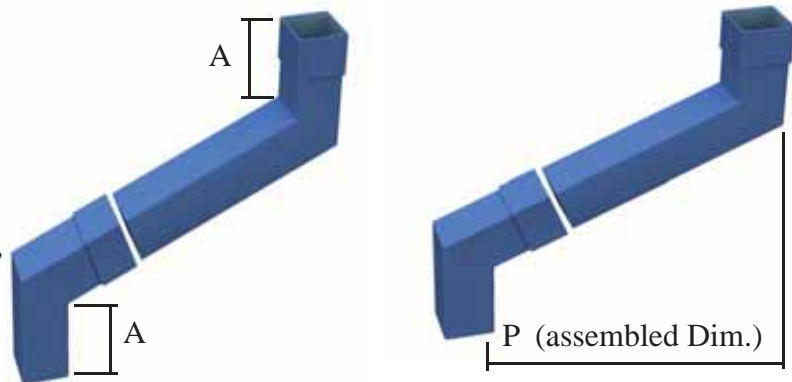


Pipe Size (mm)	A (mm)	Code P=40mm	Code P=63mm	Code P=75mm	Code P=100mm	Code P=150mm
63x63	120	2SSN40/1	2SSN63/1	2SSN75/1	2SSN100/1	2SSN150/1
76x76	120	3SSN40/1	3SSN63/1	3SSN75/1	3SSN100/1	3SSN150/1
101x76*	120	43SN40/1	43SN63/1	43SN75/1	43SN100/1	43SN150/1
101x101	120	4SSN40/1	4SSN63/1	4SSN75/1	4SSN100/1	4SSN150/1
150x150	120	6SSN40/1	6SSN63/1	6SSN75/1	6SSN100/1	6SSN150/1

Two part Swan-necks

Two part swan-necks are supplied 112.5° as standard. Please specify other requirements.

* Please specify “Forward” projecting or “Side” projecting.

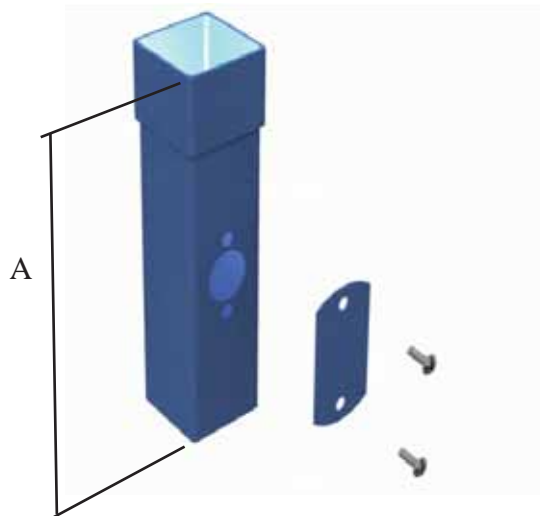


Pipe Size (mm)	A (mm)	Code P=150mm	Code P=300mm	Code P=450mm	Code P=600mm	Code P=750mm
63x63	120	2SSN150/2	2SSN300/2	2SSN450/2	2SSN600/2	2SSN750/2
76x76	120	3SSN150/2	3SSN300/2	3SSN450/2	3SSN600/2	3SSN750/2
101x76*	120	43SN150/2	43SN300/2	43SN450/2	43SN600/2	43SN750/2
101x101	120	4SSN150/2	4SSN300/2	4SSN450/2	4SSN600/2	4SSN750/2
150x150	120	6SSN150/2	6SSN300/2	6SSN450/2	6SSN600/2	6SSN750/2

“Colonnade”

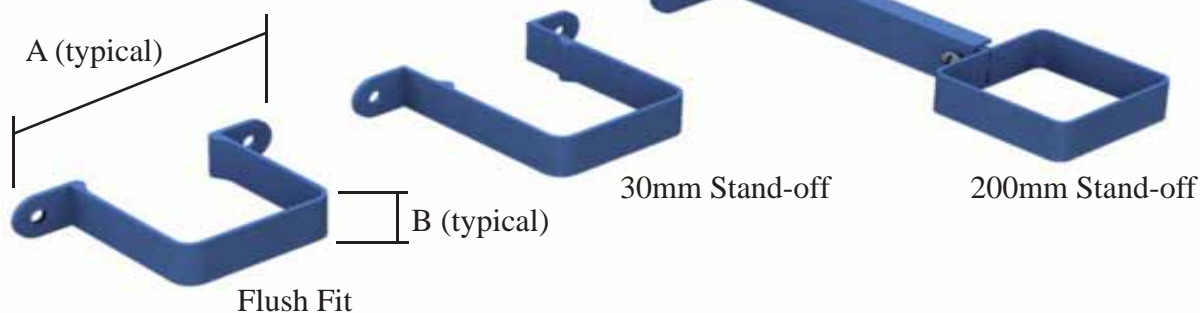
Square & Rectangular Swaged Downpipe

Access Pipe



Pipe Size (mm)	Code	A (mm)
63x63	2SAPP	300
76x76	3SAPP	300
101x76	43APP	300
101x101	4SAPP	300
150x150	6SAPP	300

Pipe Clips



Pipe Size (mm)	A (mm)	B (mm)	Code Flush Fit	Code 30mm s/off	Code 200mm s/off
63x63	125	25	2SPCFF	-	2SPCSO200
76x76	145	25	3SPCFF	3SPC30	3SPCSO200
101x76	170	25	43PCFF	-	43PCSO200
101x101	170	25	4SPCFF	-	4SPCSO200
150x150	250	25	6SPCFF	-	6SPCSO200

S
q
u
a
r
e
S
w
a
g
e
d
D
o
w
n
p
i
p
e

“Colonnade”

Square Flushjoint Downpipe

Flushjoint

As an alternative to “up”swaging downpipes, ARP can offer a flushjoint downpipe system which produces a clean line to compliment the building design. Pipe clips should be fitted at 2m maximum centres with one clip covering the pipe joint.

Example components are shown below, please contact our technical department for specific requirements. Available in 63mm,76mm, 101mm,150mm Square & 101x76mm Rectangular, they are all produced by welding a spigot into place.

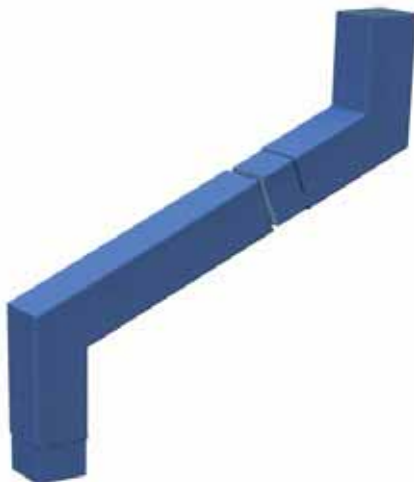
One part flushjoint swanneck



flushjoint Y-Branch



Two part flushjoint swanneck



flushjoint Shoe



Handling & Storage

Handling & Storage:

Gutters/downpipes & fittings, particularly with polyester powder coat finish should be handled with care & should preferably be stored under cover on racks to prevent scratching.

All lengths are supplied in protective polythene wrapping, components suitably packed in boxes.

If painted products are to be stored outside, cover with tarpaulin to guard against water ingress into the protective polythene.

Mill finish items should be stored under cover to avoid uneven oxidization prior to being fitted.

Safety:

The relevant safety regulations are outlined in the Health & Safety at Work Act 1974 & should be followed.

Refer to CDM regulations (Code of Practice and Design for Health and Safety in Construction 1995)

Handling mill finish or painted aluminium products does not pose any known health hazard, however it is recommended to wear protective gloves whilst handling.

When cutting or welding these products it is advisable to wear eye protection. Avoid ingestion or inhalation of any dust or fumes arising from such operations & use a face mask when necessary.

Precaution needs to be taken to avoid contact with live power lines or cables.

These products generally do not aid combustion & are rated as below.

Mill Finish, non combustible to BS 476 part 4.

Powder coated, 0.1 Fire propagation index BS476 part 6, Class 1 Flame Surface Spread BS 476 part 7.

Maintenance:

Post Installation

Gutters & downpipes should be thoroughly checked & water tested for leaks, sealant smudges & any damage that may impair the performance or appearance of the system with the necessary remedial action being taken before the system is handed over.

Inspection

The gutter should be regularly inspected in terms of fixings, joints, surface damage & build up of leaves or silt. The proximity of trees or climbing vegetation in the immediate vicinity should be noted. Lightning links, if installed should be checked for conductivity.

Cleaning:

Remove any debris in the gutter to ensure the gutter performs to its original design capacity.

Brushing down a mill finish gutter will be adequate, as an aluminium oxide layer forms over time. This acts as a natural barrier against further corrosion & thus protects the metal.

Polyester powder coated gutters & downpipes should be washed down regularly using non abrasive materials & a warm detergent solution, in marine or other aggressive environments this should be carried out at three monthly intervals. Any breaks in the surface finish should be rubbed down, primed & touched up with a suitable liquid paint.

Guarantees (if required) issued by polyester powder manufacturers or applicators are reliant upon their terms & conditions being met which include maintenance, copies available upon request.

Health & Safety

Material Safety Data Sheet - Aluminium Extrusions & Sheet Products

Product

Extruded Aluminium sections and/or Aluminium sheet formed to requirements.

Composition

The products consist of aluminium which may (or not) be subsequently coated with polyester powder paints or alternative finishes.

Health Statement

When subject to the normal purposes for which they are designed, these products do not present health risks or hazards.

By their nature these products may have sharp edges and corners and the use of gloves when handling is recommended. When installing overhead it is advisable to wear head protection.

When cutting or welding these products it is advisable to wear eye protection. Avoid ingestion or inhalation of any dust or fumes arising from such operations and use a suitable face mask when necessary.

Metal is a good conductor of electricity and precautions should be taken to ensure contact with live power lines/cables is avoided.

Precautions for Handling & Storage

No special precautions are necessary for normal handling and storage.

Procedures in the event of an emergency

There are no special risks associated and the products do not constitute a fire hazard. The products are not generally ignitable.

Waste Disposal

Waste products are not hazardous and their disposal should be in accordance with local authority regulations.

ADSHHEAD RATCLIFFE

Technical Datasheet Arbosil 1096

Arbosil 1096 is a One-part Low Modulus Neutral Cure Silicone Sealant, which cures on exposure to moisture vapour to form an elastic silicone rubber.

Main Application

Recommended for use in many forms of construction including glass wall assemblies, perimeter seals on curtain walling, perimeter sealing of polyester powder coated frames and glazing of windows in swimming pool buildings. *It is not recommended for overpainting and use against natural stone.*

Specification Compliances

BS EN ISO 11600 F/G 25LM

BS 5889 Type A: 1989

BS 6920 Part 1: 1990 (*Translucent only*)

German DIN 18545 Class 2 Type E (*Translucent only*)

German DIN 18540 Class 2 (*All colours except Translucent*)

US Federal TT-S-00 1543A Class A

Application Instructions

Joint preparation

The joint surfaces must be clean, dry and free from all contamination. The surfaces should be degreased using the appropriate Arbo Cleaner. Primers may be required on some substrates. It is recommended that Adshead Ratcliffe Technical Services Department should be consulted and advice obtained with regard to the choice of primer for specific purposes.

Joint Backing

Where applicable, appropriate joint filler e.g. closed cell polyethylene foam, should be used to provide the correct joint depth.

Application

Arbosil 1096 is supplied in cartridges and can be applied into the joint using an Arbo Caulking Gun.

All joint preparation, priming, and sealant application should be carried out in accordance with BS 8000 Part 16, the British Standard for the sealing of joints in buildings using sealants.

Joint Size suitability

Joint width

Minimum 6mm

Maximum 25mm (*single application*); 50mm (*Multiple application*)

Joint Depth

Minimum 10mm on porous substrates

Minimum 6mm on non-porous substrates

Maximum 15mm

Width:Depth ratio (*within above min/max restrictions*)

2:1 butt joints

1:1 lap joints

Storage Life

12 months in original unopened package stored in a cool, dry place out of direct sunlight.

Health & Safety

Under the Chemical (Hazards Information and Packaging for Supply) Regulations 1994, Arbosil 1096 is labelled 'irritant'. If sealant comes into contact the eyes, flush with copious volumes of cold water and obtain medical attention. For further information consult Product Safety Data Sheet P41A/B.

ADSHEAD RATCLIFFE

Technical Datasheet Arbosil 1096

Technical Data

Properties	Values
Typical Shore A hardness.....	30
Application temperature.....	+5°C to + 50°C
Service temperature.....	-50°C to +150°C
Skimming time @ 20°C/65%RH.....	5 minutes
Cure rate @ 20°C/65%RH	2mm/24 hours
Chemical resistance.....	Resistant to most dilute acids and alkalis; organic solvents may cause the sealant to swell and lose adhesion, but do not directly dissolve the sealant.
UV resistance.....	Very Good
Service life.....	25 years +
Movement accommodation.....	Butt joints (<i>movement in tension and compression</i>): 50% (<i>Not to exceed ± 30% in any one direction</i>) Lap joints (<i>movement in shear</i>): 100% (<i>Not to exceed ± 70% in any one direction</i>)
Colours.....	White, Black, Grey, Mahogany, Translucent, Anthracite.

Accessories:

Primers

Arbo Primer 2650	500ml tin (yield approximately 125 metres per tin)
Arbo Primer 2402	500ml tin (yield approximately 200 metres per tin)
Arbo Primer 2172	500ml tin (yield approximately 200 metres per tin)

Cleaners

Arbo Cleaner No.13	1Litre tin
<i>(Toluene based – not suitable for use with plastics or delicate finishes)</i>	
Arbo Cleaner No.16	1 Litre tin
<i>(Alcohol based)</i>	

Equipment

Polyethylene nozzles
Arbo Caulking Guns

Quantity Estimator

<i>Joint size</i>	<i>Metres per litre</i>
6 x 6	27.75
9 x 6	18.50
12 x 9	9.25
18 x 10	5.55
25 x 10	4.0

Packaging: 25 x 380ml plastic cartridges. Polyethylene nozzles are included in each box.

Health & Safety

ARBOSIL 1096

BIOACCUMULATION

This product is not expected to significantly bioaccumulate.

DEGRADABILITY

Not degradable.

ACUTE FISH TOXICITY

Toxicity to fish is improbable.

13 DISPOSAL CONSIDERATIONS

DISPOSAL METHODS

Dispose of waste and residues in accordance with local authority requirements.

14 TRANSPORT INFORMATION

GENERAL

The product is not covered by international regulation on the transport of dangerous goods (IMDG, IATA, ADR/RID).

15 REGULATORY INFORMATION

LABELLING



Irritant

CONTAINS

METHYL-0,0',0"-BUTAN-2-ONE-TRIOXIMOSILANE

RISK PHRASES

R43 May cause sensitisation by skin contact.

SAFETY PHRASES

S24 Avoid contact with skin.
S37 Wear suitable gloves.
S60 This material and its container must be disposed of as hazardous waste.

STATUTORY INSTRUMENTS

Chemicals (Hazard Information and Packaging) Regulations. Control of Substances Hazardous to Health.

GUIDANCE NOTES

Workplace Exposure Limits EH40. CHIP for everyone HSG(108).

16 OTHER INFORMATION

REVISION COMMENTS

General review

REVISION DATE 120/9/05

REV. NO./REPL. SDS GENERATED 26/02/04

SDS NO. 10171

RISK PHRASES IN FULL

R36/38 Irritating to eyes and skin.

R43 May cause sensitisation by skin contact.