

PlumbQwik by Flexseal **Pushfit Couplings**

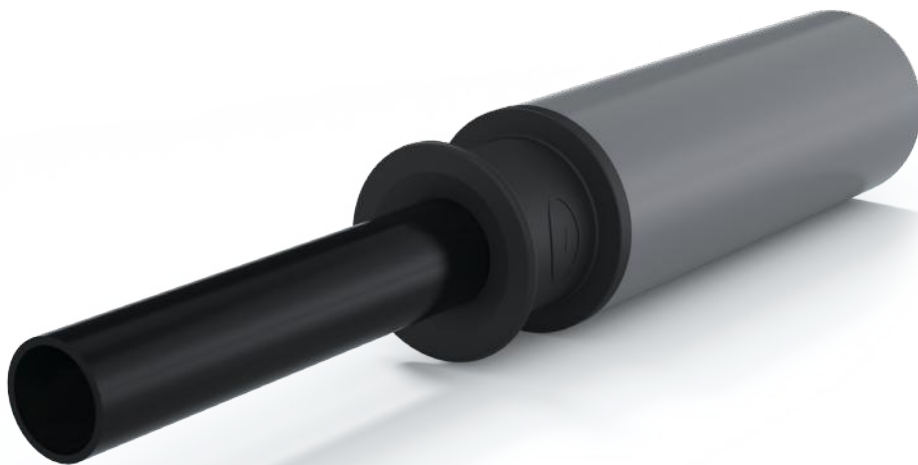
- Creates a watertight seal between two plain ended pipes
- Unlike similar products, no folding, cutting, tearing, tools or tightening required; simple pushfit connection
- Designed for waste water applications
- Independent of any pipe brand, meaning they can connect any pipe, provided they fall within the couplings size range
- Connect what would normally be incompatible pipe systems
- Our fastest plumbing connection yet
- Remove and re-fit as required
- Permanent or temporary solution
- Tested to 0.6 bar in accordance with BS EN 295-4:2013



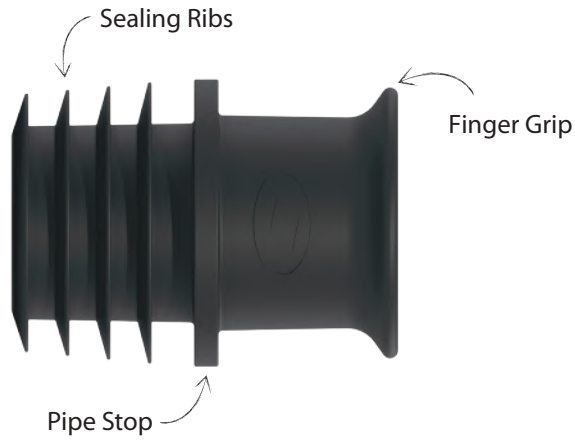
The PlumbQwik Pushfit range consists of three variations designed to provide straight or adaptor connections to the most common plumbing waste pipes. Each product is designed to accommodate a multitude of pipes making the range as universal as possible.

The pushfit design makes these products quicker and easier to install than traditional PlumbQwik's and most other methods of plumbing pipe connections.

This, combined with a robust body and ribs, ensures a connection is user friendly, secure and reliable.



Fit horizontally or vertically



Product Code	PQPXXX
Description	PlumbQwik Pushfit Coupling
Size Range	32-60mm
Material	EPDM Rubber
Pressure Rating	0.6bar, 8.70psi
Temperature Range	-50°C to 80°C constant, 100°C intermittent
Standards	BS EN 681-1:1996 BS EN 295-4:2013

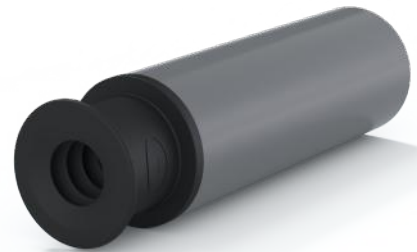
Product Code	Outside Pipe Diameter Range (mm)		Product Design
PQP45	45-35		
Product Code	Inside Pipe Diameter Range (mm)	Outside Pipe Diameter Range (mm)	
PQP60-40	60-50	40-32	
Product Code	Outside Pipe Diameter Range Pipe A (mm)	Outside Pipe Diameter Range Pipe B (mm)	
PQP58-45	58-54	45-41	



Installation



1. Clean the internal/external surface of the pipes to be connected.



2. Push the coupling onto/into the first pipe up to the pipe stop



3. Push the second pipe onto/into the opposite end of the coupling.

Note: When pushing the pipe onto/into the coupling, ensure correct installation by aligning both pipes with the products central pipe stop. Lubrication may be required, if so use sparingly, water is recommended.



General Information

Quality, Standards and Approvals

Flexseal has been certified by the British Standards Institution (BSI) as a company of assessed capability, with a quality management system which meets the requirements of BS EN ISO 9001:2015

Flexseal, part of the Fernco Group, are the leaders in wastewater connection innovation; utilising the most advanced methods and techniques for precision-manufactured products, all of which comply with or exceed relevant British and European standards to ensure reliability and sustainability.

Environment

Flexseal operate Environmental Management Systems which are certified to ISO 14001: 2015.

Supply

Flexseal are proud members of the Builders Merchants Federation (BMF). All Flexseal products are supplied through a national and global network of distribution and merchant partners. For stockist details, contact Flexseal.

Technical Support

Flexseal have a team of product experts on hand to support all customers with technical support and advice.

Contact Flexseal Technical Department:

Tel: +44 (0) 1226 344100

Email: technical@flexseal.co.uk

Enquiries

UK Sales:

Tel: +44 (0) 1226 340 888

Email: sales@flexseal.co.uk

International Sales:

Tel: +44 (0) 1226 344 105

Email: export.dept@flexseal.co.uk

